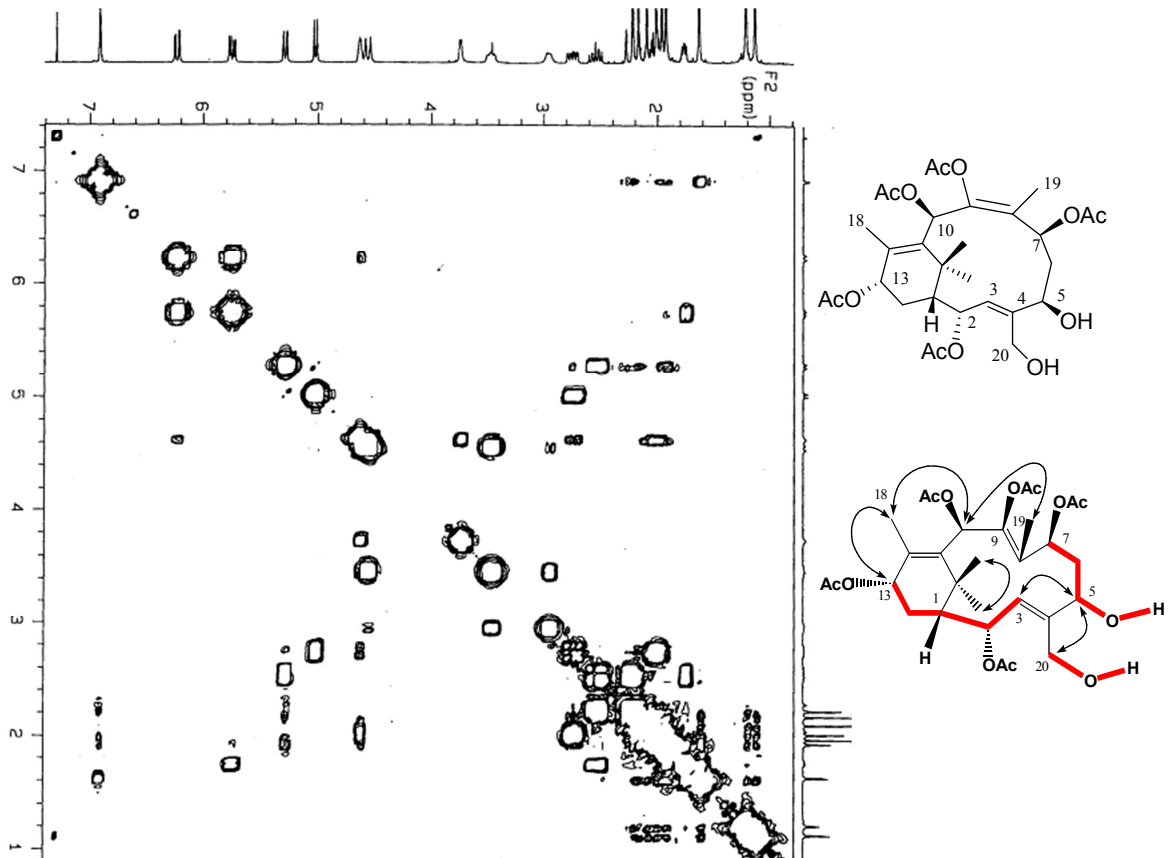
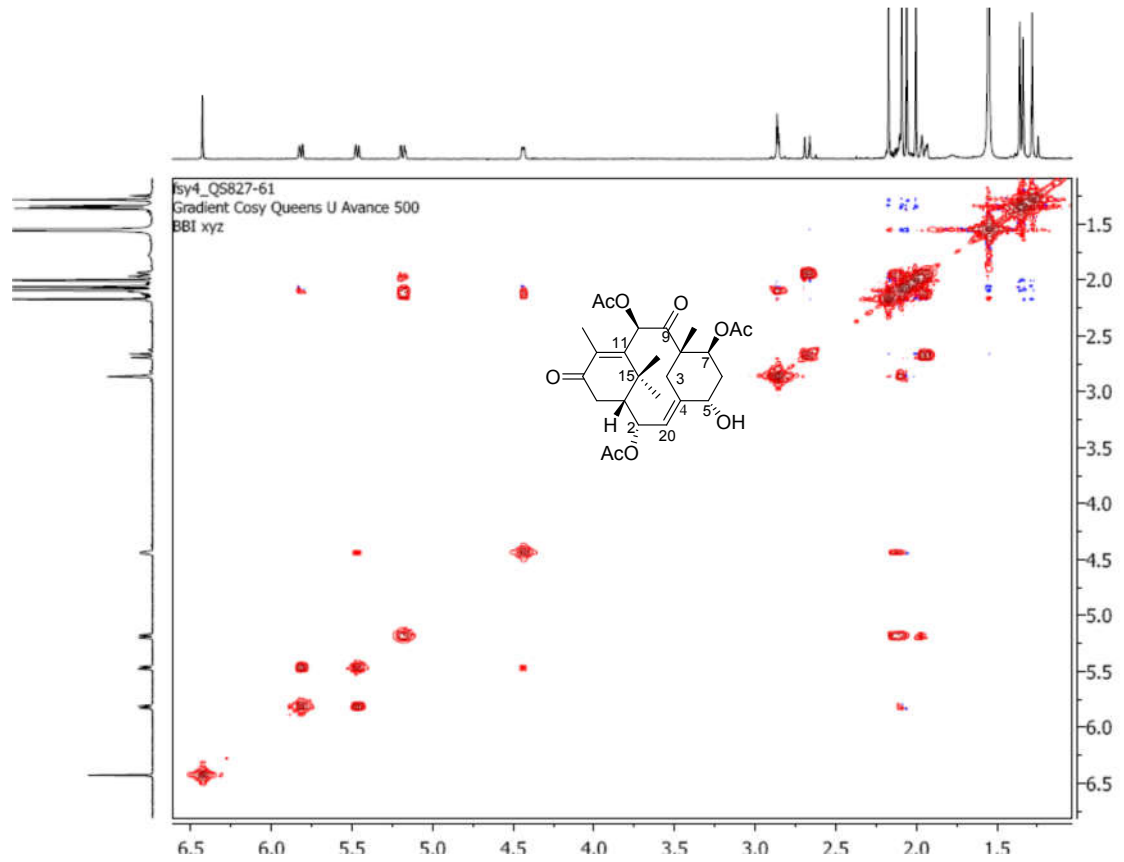


天然药物化学专业研究生练习题-归属信号、推断结构

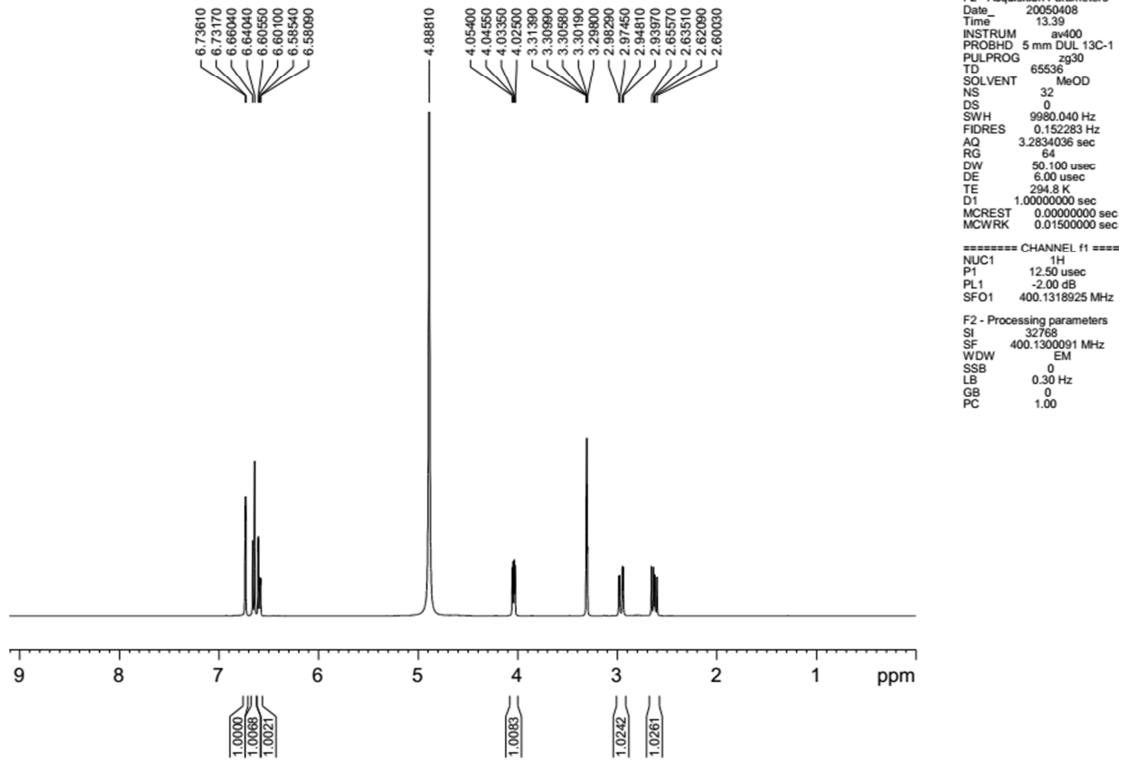


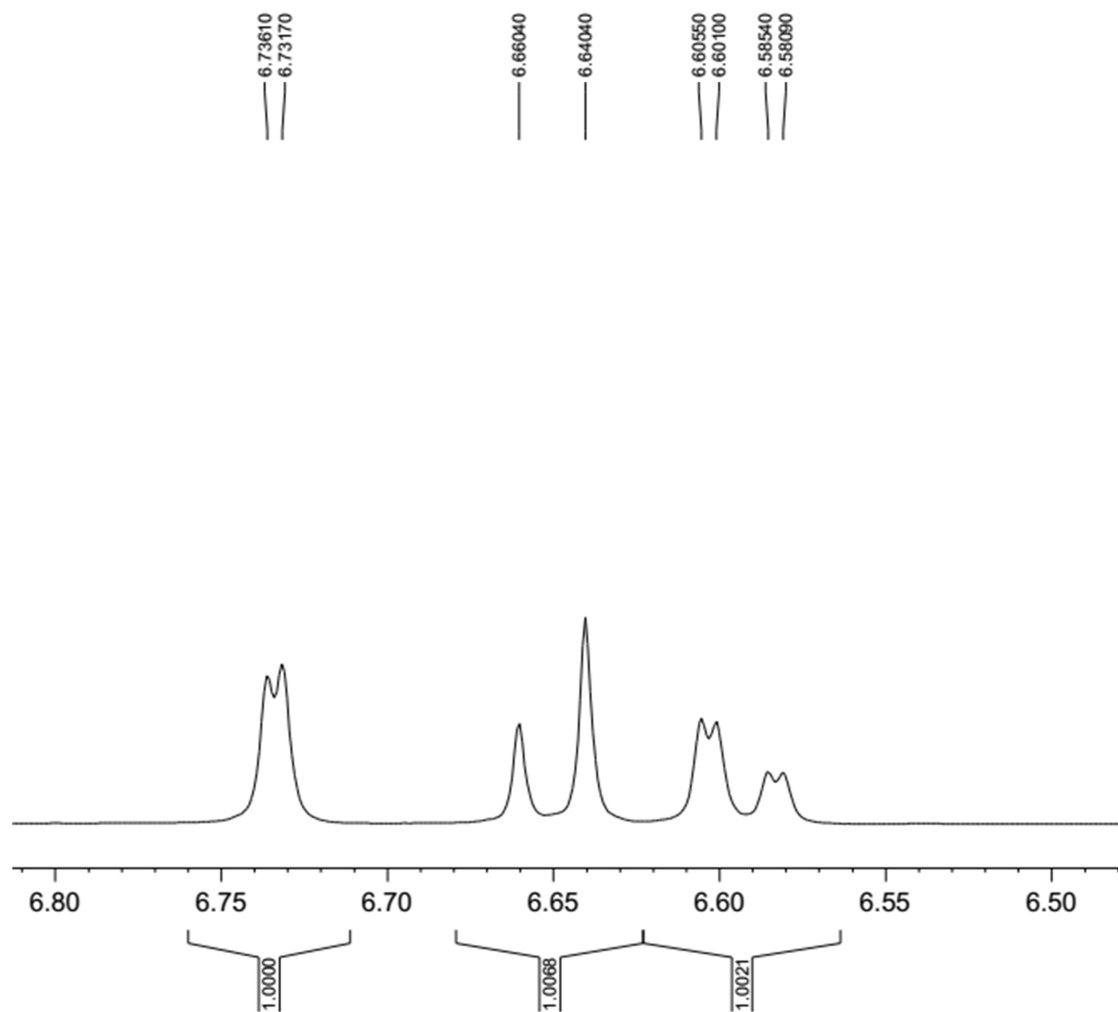
推导结构

从某一常见中药的根中分离得到一个化合物，HR-MS
给出分子式是 $C_9H_{10}O_5$ 。

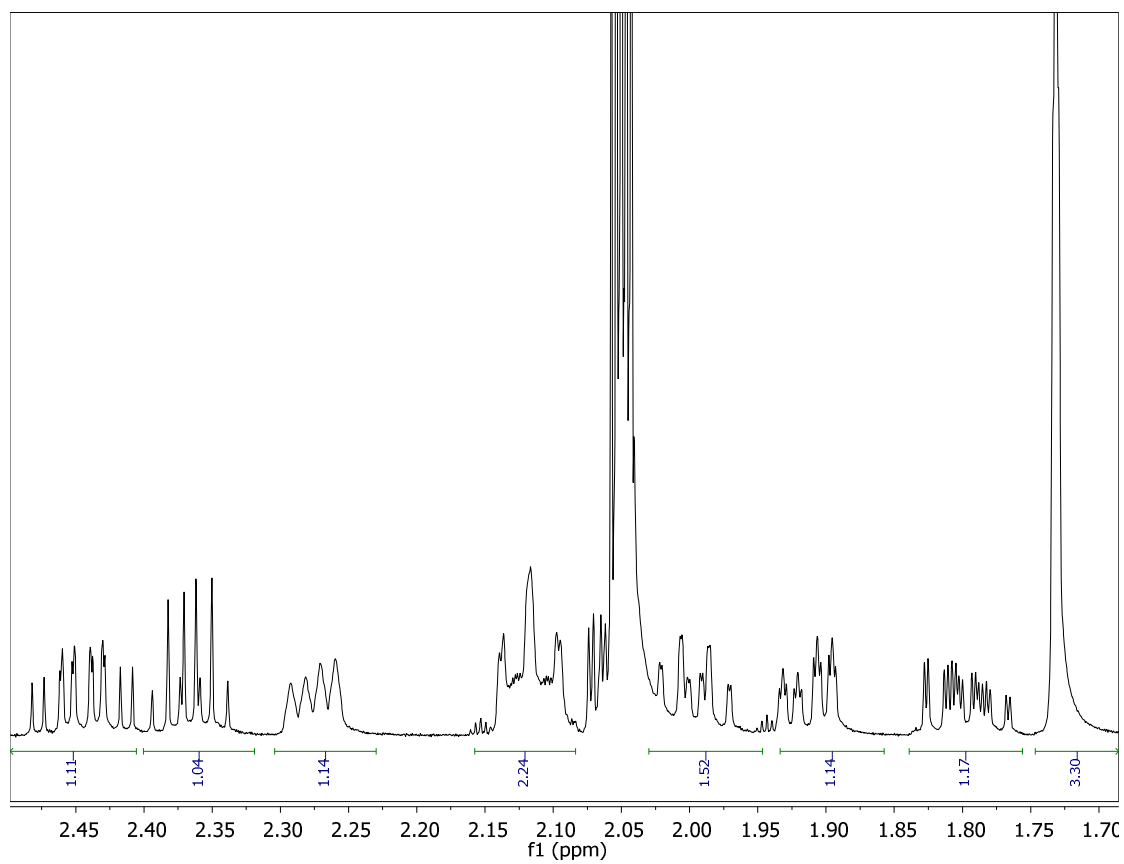
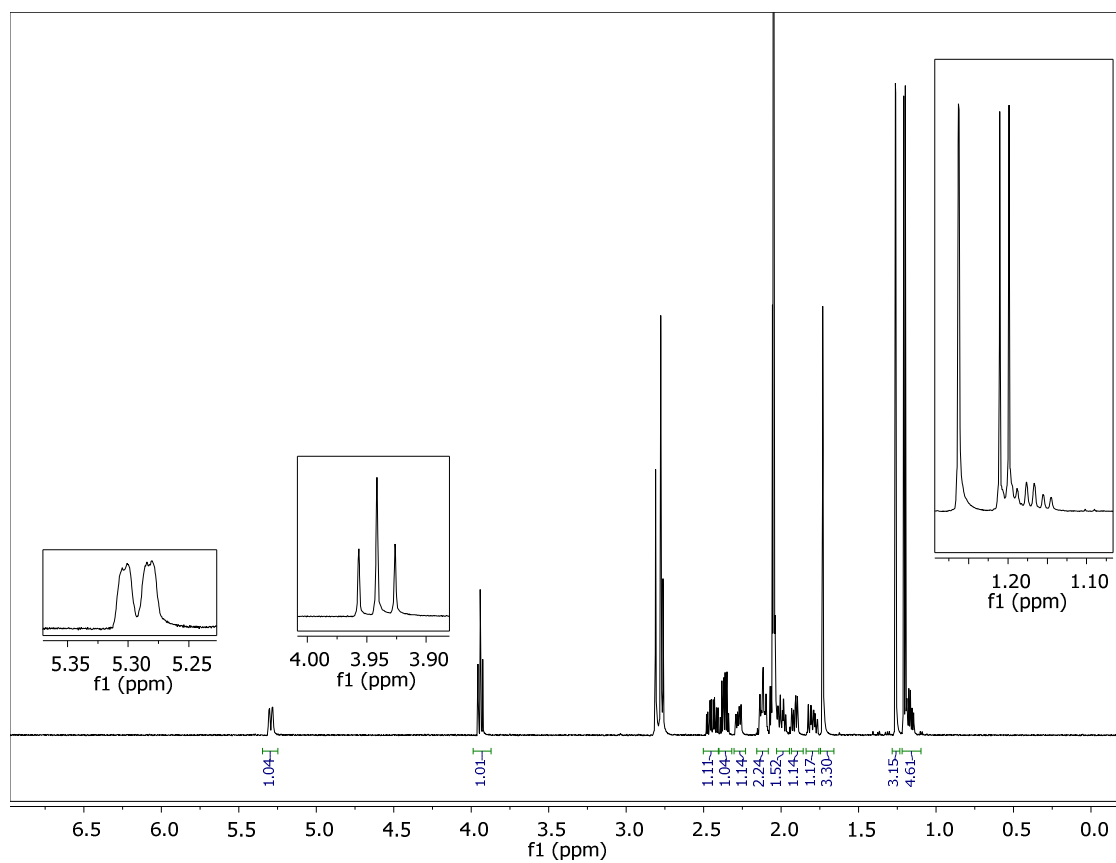
1H -NMR 和 ^{13}C -NMR 图谱如下。

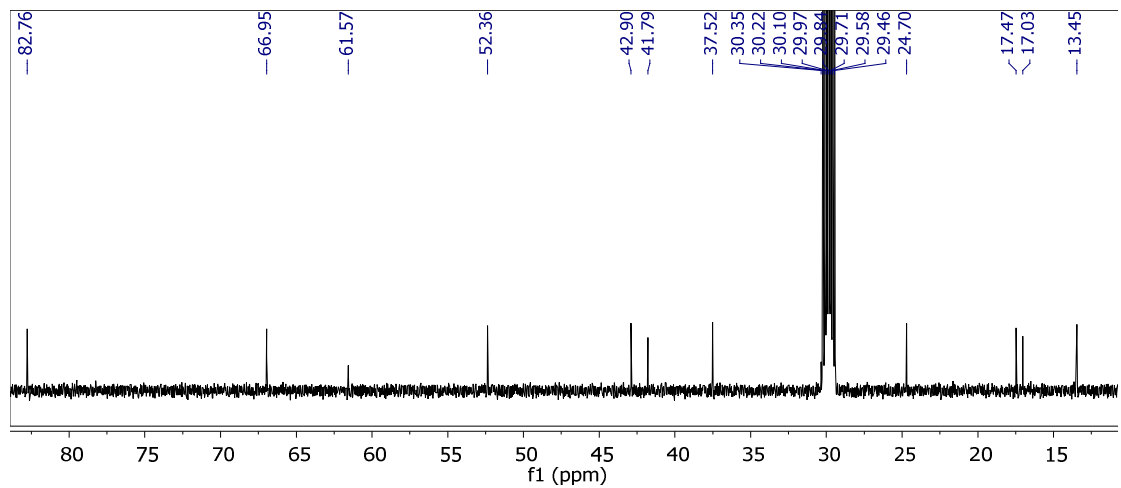
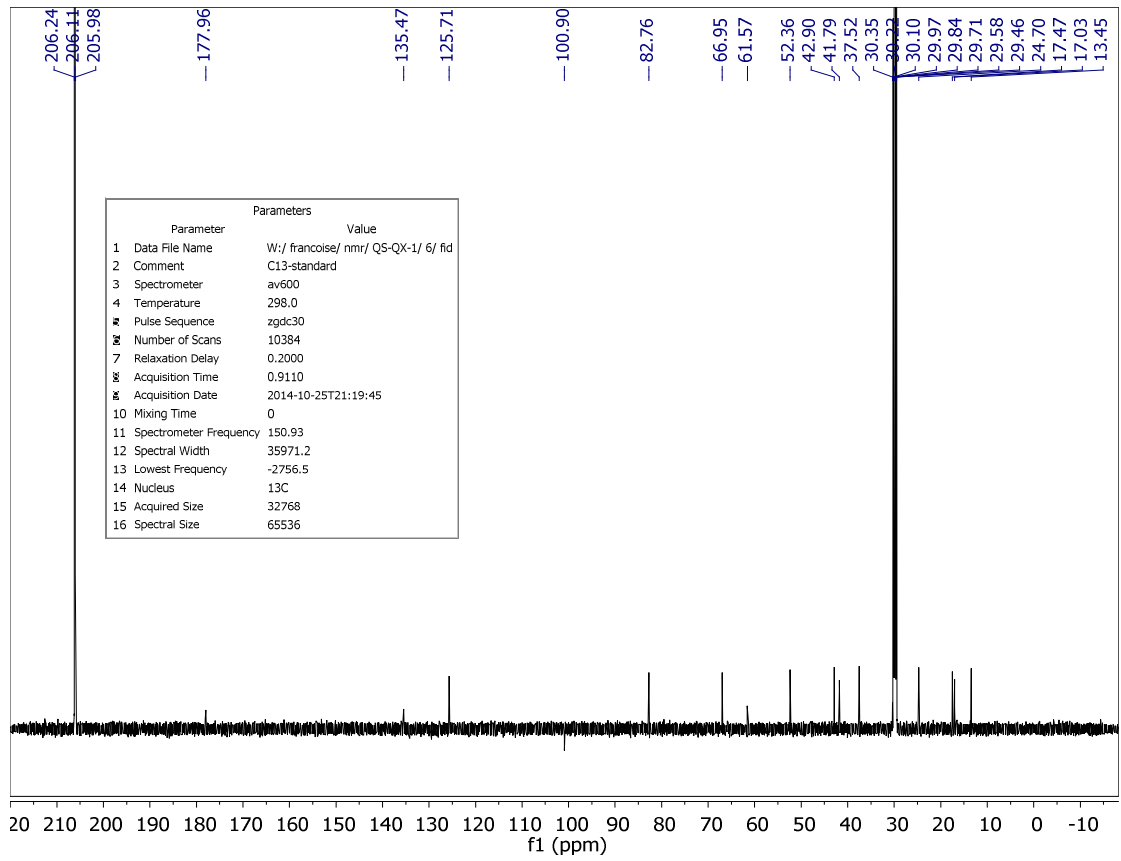
试推导其可能的结构。

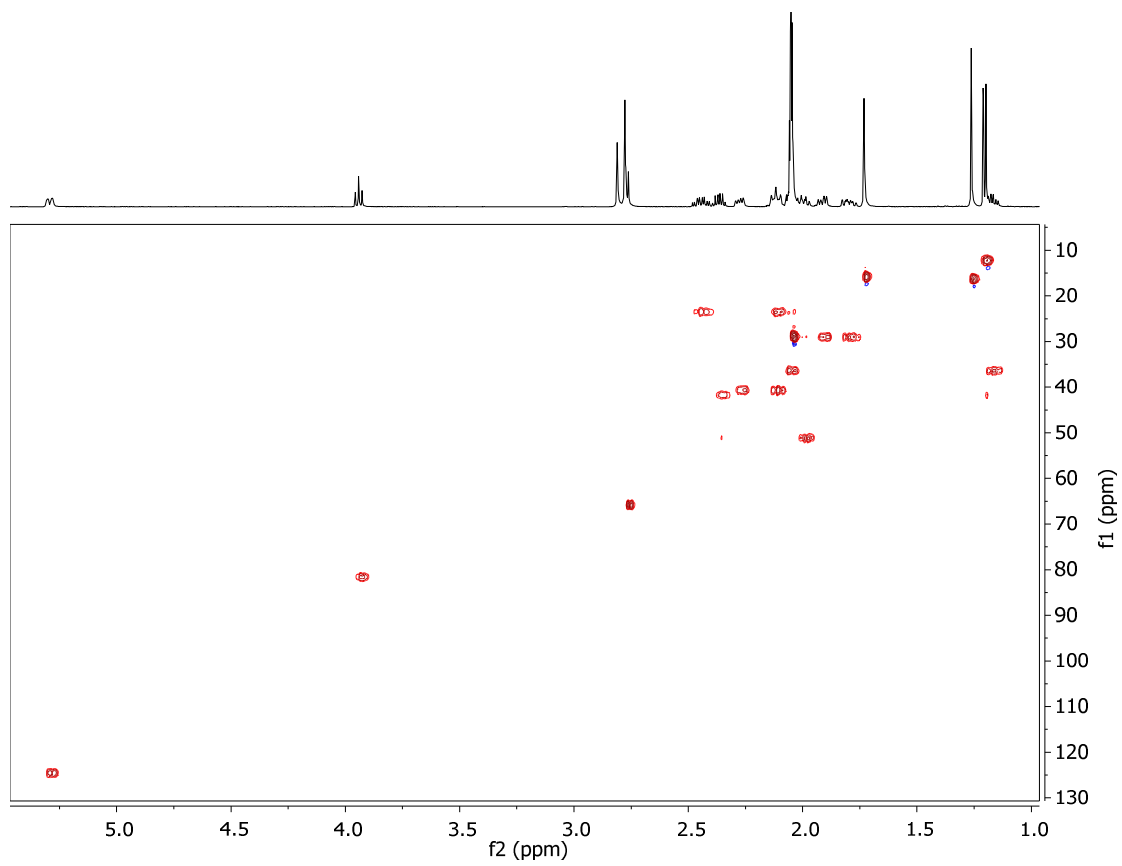
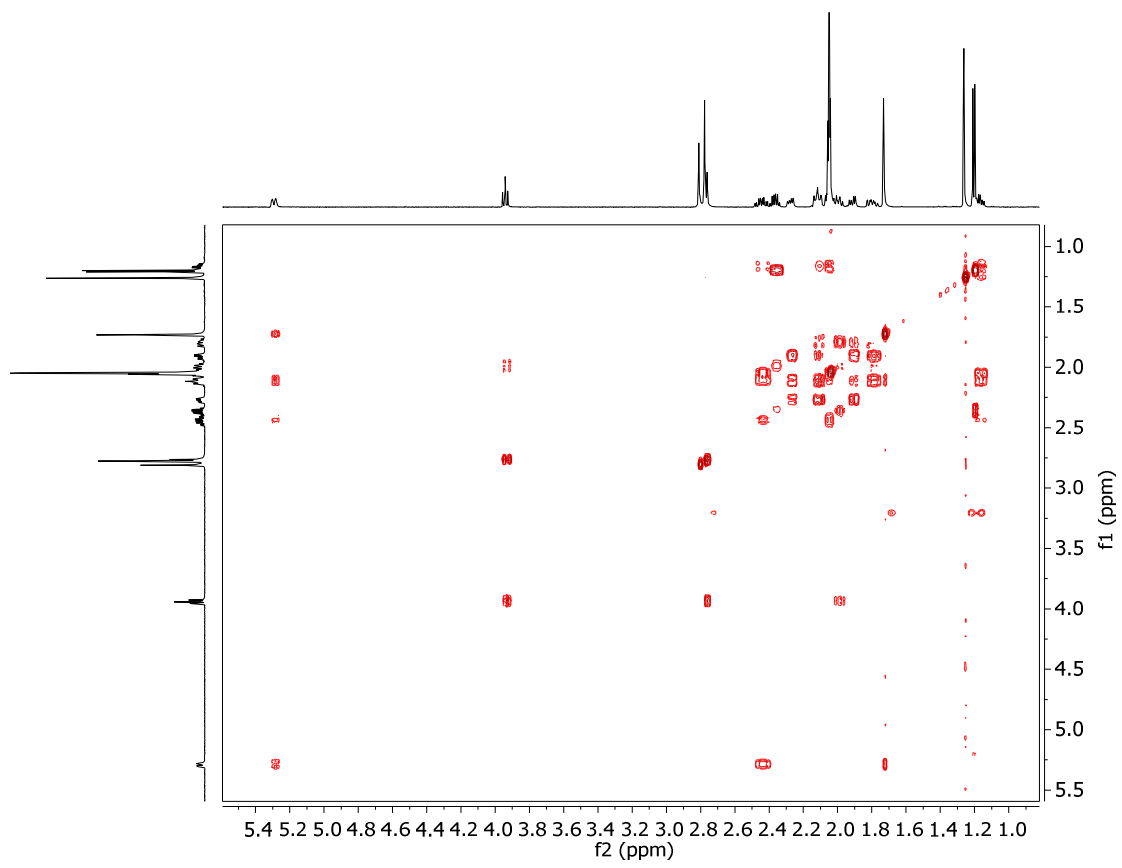


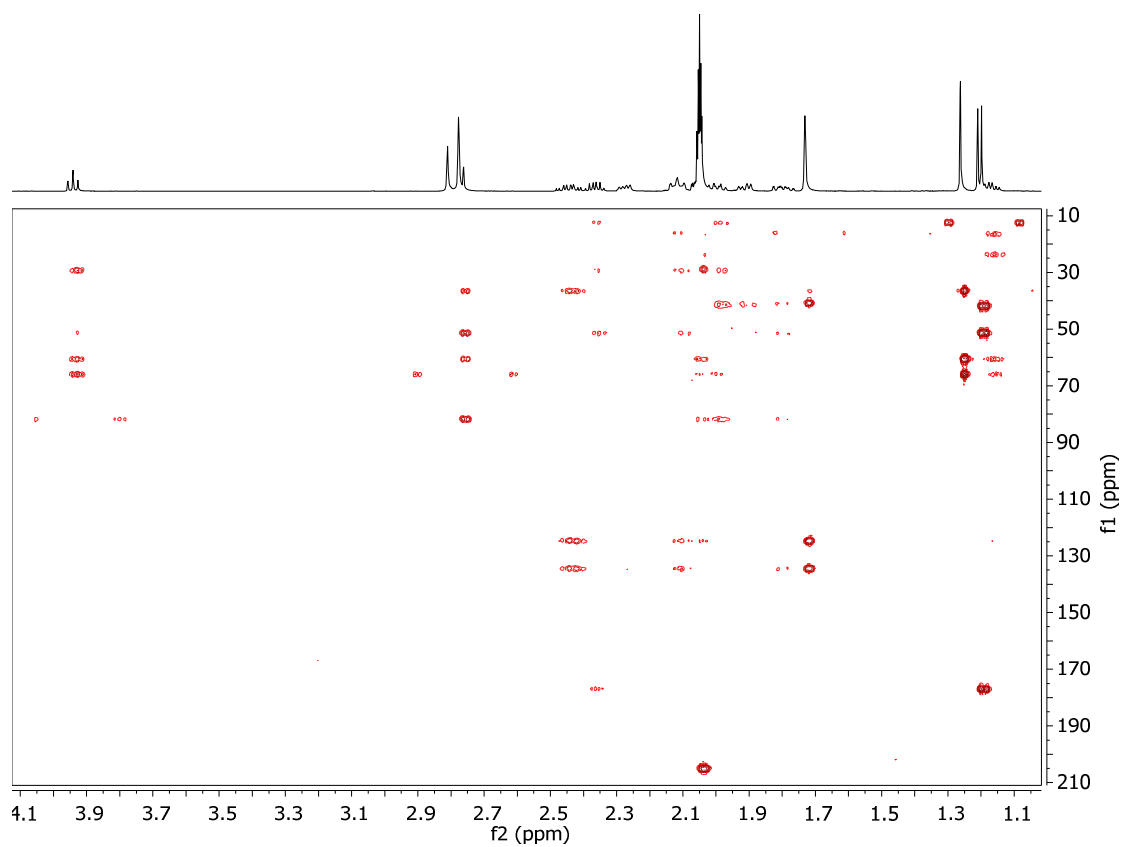


对下列化合物的 1H-和 13C-NMR 信号进行归属









QX-1 in acetone- d_6 可能的结构是:

